



DAN PATRICK
LIEUTENANT GOVERNOR

CAPITOL OFFICE
State Capitol, Room 2E.13
Post Office Box 12068
Austin, Texas 78711
(512) 463-0001
Fax: (512) 463-8668

July 11, 2024

Benjamin Abbott
Federal Coordinating Officer – DR-4798
DHS/FEMA Region 6
800 N. Loop 288
Denton, TX 76209-3698

Subject: Amendment Request for FEMA-4798-DR-TX to Modify Incident Period and Add Individual Assistance

Dear Mr. Abbott:

On July 9, 2024, the state of Texas received a major disaster declaration, FEMA-4798-DR-TX for Hurricane Beryl authorizing Public Assistance, Category A and B, including direct federal assistance for sixty-seven counties. Texas experienced damage from storm surge, flooding, tropical storm force winds, and tornadoes followed by continued extreme heat and power outages, with over two million power outages at the peak.

Under the provisions of 44 CFR § 206.40, I respectfully ask that the following counties be added under FEMA-4798-DR-TX for all programs of the Individual Assistance Program as part of the major disaster declaration. The counties are Brazoria, Chambers, Galveston, Harris, Jackson, Jasper, Jefferson, Liberty, Matagorda, Montgomery, Orange, Polk, San Jacinto, Walker, and Wharton. Initial reports indicate these 15 counties have numerous homes that have been damaged from Hurricane Beryl. In accordance with 44 CFR § 206.33, damage assessments, as required by FEMA, indicate that many homes in these counties suffered major damage or were destroyed by this disaster. To date, the state has validated reports of 85 destroyed homes and 426 homes with major damage.

Additionally, the state requests that the incident period be re-opened and be designated as continuing, as the state is still engaged in the response to Hurricane Beryl. Amid extreme heat, over one million Texans are still without power and restoration efforts are still ongoing. The state and local jurisdictions continue to be engaged in the protection of life and property.

As we continue the federally-required damage assessments in other impacted counties, I reserve the right to request assistance for additional counties in Texas.

Sincerely,

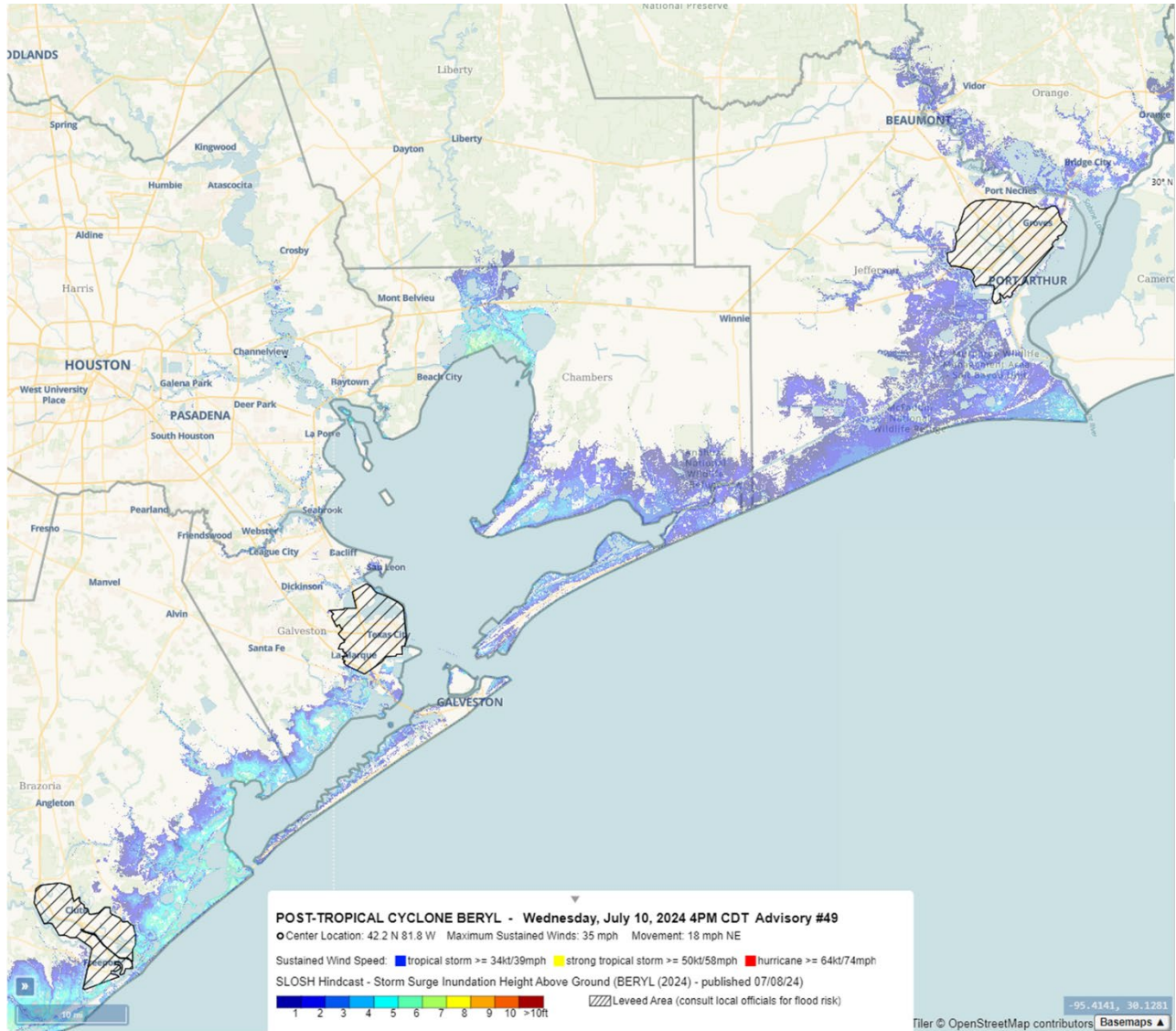
Dan Patrick
Acting Governor

Attachment: Additional County Impacts

DR-4798-TX

Additional County Impacts

Brazoria, Chambers, Galveston, Harris, Jackson, Jasper, Jefferson, Liberty, Matagorda, Montgomery, Orange, Polk, San Jacinto, Walker, Wharton



Brazoria County

Brazoria County was impacted by many severe weather events beginning April 2024 – In particular, and most recent, Hurricane Beryl. The impacts included hurricane force winds, large amounts of rainfall, and localized flooding in the county. Hurricane Beryl has resulted in 1,503 impacts to residential structures. Of these, 96 have been validated by TDEM as major and destroyed.

On July 10th, the Public Utility Commission of Texas reported over 94,300 residents with power outages. Due to the repeated and widespread severe weather, most of these residents will be without power for more than 48 hours. Loss of power has put a strain on communication and the ability to disseminate emergency notifications to residents.

Brazoria County has a total population of 398,938 and a per capita income of \$39,891. The latest census data reveals that 10.1% of the County population lives in poverty, and an additional 6% report having a disability. FEMA's SOVI data indicates the risk factor for Brazoria County is relatively high.

FEMA has certified 9 destroyed and 52 major iSTAT survivor submissions in Brazoria County. 13.5% of the total iSTAT entries in the county had insufficient insurance self-reported.

Chambers County

Chambers County was impacted by many severe weather events beginning April 2024 and lasting through early July. Most of the county's reported damage from Hurricane Beryl has occurred within the cities of Baytown and Anahuac. These impacts have been hurricane force winds, rain, and localized flooding. Beryl has resulted in 61 impacts to residential structures. Of these, 6 have been validated by TDEM as destroyed and major.

On July 9th, the Public Utility Commission of Texas (PUCT) initially reported over 6,500 residents with power outages. By July 10th, PUCT reported 25,000 customers had sustained power outages. Due to the repeated and widespread severe weather, most of these residents will be without power for more than 48 hours. Loss of power has put a strain on communication and the ability to disseminate emergency notifications to residents.

Chambers County, with a population of 53,876 and a per capita income of \$42,628, contains significant areas of need, particularly within the city of Baytown, where most of Chambers County residents are concentrated. The latest census data reveals that 8.3% of the County population lives in poverty, and an additional 8.3% report having a disability. These statistics highlight the urgent need for targeted assistance in this community. FEMA's SOVI data indicates the risk factor for Chambers County is relatively moderate.

FEMA has certified two destroyed and four major iSTAT survivor submissions in Chambers County. Survivor submissions also indicated that 13.1% of the iSTAT entries in the county had

insufficient insurance.

While located close to Houston, Chambers County is rural and has exhausted their limited resources from battling repeated disasters. Additionally, the county's location gives a unique set of complications, as it is located right on Trinity and Galveston Bays. Being so close to the coast, the County is vulnerable to coastal flooding, high winds, and storm surge which threatens the safety of the community.



Galveston County

The impacts of Hurricane Beryl on Galveston County include hurricane force winds up to 100 mph, heavy rains, and localized flooding. Beryl has resulted in 982 impacts to residential structures. Of these, 47 have been validated by TDEM as destroyed or major.

On July 9th, the Public Utility Commission of Texas reported over 115,400 residents with power outages, which were sustained for an extended period. About 70% of the island's residents had lost power, with customers experiencing multiple hours of interruption in service.

Significant damage occurred to county roads and there were noted issues with soil erosion, with jurisdictions within the county submitting 141 separate instances of destructive water damage to roadways and seven requests for assistance with vegetative debris. Many of the recreation

centers within the community were shut down during Hurricane Beryl and have been unable to reopen due to power outages, structure damage, and debris. Like many counties within Texas, Galveston phone companies have been down and have lost phone system communications. Galveston County had announced that damage was far worse than expected and that it had put a strain on the island. Statistics show Galveston County has a population of 361,744 and a per capita income of \$42,603. The latest census reported that 13.5% of the population lives in poverty, and 8.8% of the population reported a disability. FEMA certified 32 residences as major and destroyed. FEMA's SOVI data indicates the risk factor for Galveston County is relatively high. Of all the survivors reporting damages within Galveston County, 10.9% indicated they have no insurance coverage.

Harris County

Harris County experienced deaths and damage caused by Hurricane Beryl that led to widespread suffering within the community. These impacts have included winds up to 140 mph, tornadoes, heavy rains, and localized flooding. Hurricane Beryl has resulted in 3,117 impacts to residential structures. Of these, 185 have been certified by TDEM as major and destroyed.

The death toll from Hurricane Beryl has risen to 11 - of those deaths, three people were killed by fallen trees, one died in a fire, two drowned, and a public servant died after becoming trapped in his vehicle in floodwaters. The Houston Police Department officer who lost his life during the storm, had his vehicle submerged by flood waters while he was on his way to work. Harris County has seen the most deaths from this incident and the community will have to grieve these profound losses.

On July 10th, the Public Utility Commission of Texas reported over 975,750 residents with power outages. Due to the repeated and widespread severe weather, most of these residents will be without power for more than 48 hours. Loss of power has put a strain on communication and the ability to disseminate emergency notifications to residents.

Harris County has a population of 4,835,125 and a per capita income of \$38,184. The latest census reported that 16.4% of the population lives in poverty, and 7.2% of the population reported disability. FEMA SOVI data indicates the risk factor for Harris County is very high. FEMA has certified 15 destroyed and 109 major iSTAT submissions. In the process of battling the impacts of Hurricane Beryl, Harris County has exhausted its resources, equipment, personnel, and mutual aid resources in response to this incident. The county has limited financial resources, and there are limited housing opportunities for the survivors.

Jackson County

Jackson County experienced damage caused by Hurricane Beryl that led to widespread utility outages, with customers experiencing multiple days of interruption in service. These impacts have been in the form of winds up to 80 mph, heavy rains, and localized flooding. Hurricane Beryl has resulted in 27 impacts to residential structures. Of these, 5 have been validated as major damage by TDEM.

On July 9th, the Public Utility Commission of Texas reported over 1,300 residents with extended power outages. Due to the repeated impacts of severe storms, this area observed repeated outages beginning in late April.

Jackson County has a population of 15,221 and a per capita income of \$29,684. The latest census reported that 15.2% of the population lives in poverty, and 10.9% of the population reported a disability. FEMA certified two residences as major. FEMA SOVI data indicates the risk factor for Jackson County is relatively moderate.

Jackson County has exhausted its resources, equipment, personnel, and mutual aid resources in response to this incident. The county has limited financial resources, and there are limited housing opportunities for the survivors.



Jasper County

Jasper County suffered an EF-2 Tornado on July 8, 2024, with sustained winds exceeding 110 mph. Jasper County has been impacted by numerous severe weather events beginning in April 2024. In April 2024, Jasper County received an SBA declaration due to drastic weather impacts and has been recovering from consistent bombardments of natural disasters. These impacts have been in the form of straight-line winds, tornados, and localized flooding and have resulted in four impacts to residential structures. Hurricane Beryl has resulted in 107 impacts to residential structures. Of these, 19 have been validated by TDEM as destroyed and major.

The aftermath of Hurricane Beryl can be especially devastating for Jasper County, which has a population of 32,694 and a per capita income of \$31,251. According to the latest census, 19.4% of the population lives in poverty, and 19.5% report having a disability. These statistics highlight the vulnerability of the county's residents, many of whom already struggle to meet basic needs and require additional support, especially after the most recent impacts of severe weather incidents from April.

Despite FEMA's SOVI data indicating a relatively low risk factor for Jasper County, the hurricane's impact has been significant. FEMA-certified iSTAT submissions reported 21 residences validated as major and destroyed. Furthermore, 20.8% of iSTAT entries indicated insufficient insurance coverage, compounding the financial strain on affected individuals and families.

In a community with high rates of poverty and disability, the loss of homes and inadequate insurance coverage can exacerbate existing hardships. The need for comprehensive recovery efforts is critical to support these vulnerable populations, restore housing, and provide the necessary resources to rebuild their lives.

Jefferson County

Jefferson County has been at the forefront of many disasters throughout the past months. These impacts have been in the form of straight-line winds, tornadoes, and heavy rains. Due to Hurricane Beryl, these impacts have resulted in 51 impacts on residential structures. Of these, two have been validated by TDEM as major. On July 9th, the Public Utility Commission of Texas reported over 9,700 residents experiencing prolonged power outages.

Jefferson County, home to 251,496 residents with a per capita income of \$30,770, faces significant challenges. According to the latest census, 18.8% of residents live in poverty, and 10% report having a disability. FEMA-certified iSTAT submissions reported one residence validated as major. FEMA's SOVI data indicates a relatively high-risk factor for the county. Additionally, survivor submissions reveal that 30.9% of iSTAT entries had insufficient insurance.

The prolonged power outages are particularly harmful to this community. With nearly one-fifth of the population living in poverty and a significant number of individuals with disabilities, the loss of power exacerbates existing hardships. Residents may struggle to access necessary medical care, maintain communication, preserve food, and water supplies, and cope with extreme temperatures. Insufficient insurance coverage further compounds the financial strain on affected families, making it difficult for them to recover from the disaster. Immediate and substantial federal assistance is essential to address these critical needs and support the community's recovery.

Liberty County

Liberty County has been affected by the impacts of Hurricane Beryl. The disaster brought intense winds that resulted in widespread power outages, downed trees, and damaged structures.

Numerous homes and businesses experienced roof damage and broken windows. Heavy rainfall from Beryl caused severe flooding in low-lying areas. Roads were impassable, and some neighborhoods were inundated, leading to water damage in homes and buildings. These impacts have resulted in 91 impacts to residential structures. Of these, 22 have been validated by TDEM as destroyed and major.

On July 9th, the Public Utility Commission of Texas reported over 25,800 residents with power outages, which were sustained for an extended period. Due to the repeated impacts of severe storms, this area observed repeated outages beginning in late April. The lack of power can result in the failure of heating or cooling systems, posing additional risks to health and comfort. Therefore, the restoration of power is a critical component of recovery efforts in hurricane-hit areas, as it supports healthcare, communication, food safety, and overall well-being.

Liberty County has a population of 108,272 and a per capita income of \$25,667. The latest census reported that 19.9% of the population lives in poverty, and 11.4% of the population reported a disability. FEMA-certified iSTAT submissions reported 21 residences validated as major and destroyed. FEMA's SOVI data indicates the risk factor for Liberty County is relatively moderate. Survivor submissions also indicated that 47% of the iSTAT entries in the county had insufficient insurance.

Matagorda County

Matagorda county was hit by Hurricane Beryl early Monday morning as a Category 1 storm. It battered the region with wind gusts exceeding 90 mph, a life-threatening storm surge, and torrential rainfall. These impacts have been in the form of straight-line winds, and localized flooding. These impacts have resulted in 203 impacts to residential structures. Of these, 40 have been validated by TDEM as destroyed and major.

On July 9th, the Public Utility Commission of Texas reported over 11,850 residents with power outages, which were sustained for an extended period. Matagorda County, with a population of 36,359 and a per capita income of \$29,001, is in dire need of Individual Assistance following Hurricane Beryl. The majority of residents live in Bay City and Palacios, where the latest census reveals that 19.9% of the population lives in poverty and 12.1% have reported a disability. FEMA's SOVI data indicates a moderate risk factor for the county, but the real impact has been severe. FEMA-certified iSTAT submissions report eight majorly damaged homes and six destroyed homes. Survivor submissions indicate that 36.3% of entries had insufficient insurance. Matagorda County's coastal location makes it highly susceptible to damage and flooding, exacerbating the hardships faced by this vulnerable community. Immediate assistance is crucial to support recovery and rebuilding efforts.



Montgomery County

Hurricane Beryl had a profound impact on Montgomery County, causing widespread damage and disrupting the lives of its residents. In addition to the hurricane, the county has been recovering from strong winds and heavy rains that occurred due to the severe weather that started on April 26th, 2024, and resulted in a major disaster declaration.

Due to impacts, there have been 615 damage submissions. Of these, 75 have been validated by TDEM as major and destroyed. FEMA-certified iSTAT submissions report 49 majorly damaged homes and 15 destroyed homes. Survivor submissions indicate that 17.6% of entries had insufficient insurance.

According to FEMA's National Risk Index, Montgomery County's Risk Index rating is relatively high compared to the rest of the U.S., and its community resilience is relatively low.

On July 10th, the Public Utility Commission of Texas reported over 155,000 residents with power outages, which were sustained for an extended period. Montgomery County, with a population of 711,354 and a per capita income of \$48,161, is in dire need of individual assistance following Hurricane Beryl. The latest census reveals that 8.5% of the population lives in poverty, and 6.9% have reported a disability. FEMA's SOVI data indicates a relatively high-risk factor for the county.

Orange County

Hurricane Beryl brought high winds that resulted in widespread power outages, downed trees, and damaged structures. Numerous homes and businesses experienced roof damage and broken windows. Heavy rainfall from Beryl caused severe flooding in low-lying areas. Roads were impassable, and some neighborhoods were inundated, leading to water damage in homes and buildings. This resulted in 25 impacts to residential structures. Of these, two have been validated by TDEM as major.

On July 9th, the Public Utility Commission of Texas reported over 4,700 residents with power outages, which were sustained for an extended period.

Orange County has a population of 85,722 and a per capita income of \$35,301. The latest census reported that 13.8% of the population lives in poverty, and 11.4% of the population reported a disability.

FEMA has certified two homes with major damage within iSTAT. FEMA's SOVI data indicates that Orange County's risk factor is relatively high. Survivor submissions also indicated that 45% of the iSTAT entries in the county had insufficient insurance.

Polk County

Polk County has been impacted by numerous severe weather events, including straight-line winds, heavy rains, and localized flooding which have led to widespread utility outages, with customers experiencing multiple days of interruption in service. This resulted in 24 impacts to residential structures. Of these, five have been validated by TDEM as destroyed and major.

On July 9th, the Public Utility Commission of Texas reported over 24,500 residents with power outages, which were sustained for an extended period. Due to the repeated impacts of severe storms, this area observed repeated outages beginning in late April.

Polk County has a population of 54,186 and a per capita income of \$27,922. The latest census reported that 18.7% of the population lives in poverty, and 18.9% of the population reported a disability.

FEMA's SOVI data indicates the risk factor for Polk County is relatively low. Survivor submissions also indicated that 45.8% of the iSTAT entries in the county had insufficient insurance. TDEM has validated and FEMA certified two destroyed and seven major homes within iSTAT.

San Jacinto County

San Jacinto County has been impacted by numerous severe weather events beginning in April and lasting through early July.

These impacts have been in the form of severe storms that produced substantial amounts of rain, strong winds, and localized flooding. This resulted in 25 impacts to residential structures. Of these, four have been validated by TDEM as destroyed and major. Hurricane Beryl caused downed trees which have blocked roadways and many residents have been attempting to assist clearing this debris. There has been one fatality in San Jacinto County due to the Hurricane Beryl.

On July 9th, the Public Utility Commission of Texas reported over 18,500 residents with power outages, which were sustained for an extended period. Due to the repeated impacts of severe storms, this area observed repeated outages beginning in late April.

San Jacinto County has a population of 28,936 and a per capita income of \$28,124. The latest census reported that 16.8% of the population lives in poverty, and 16.4% of the population reported a disability.

FEMA's SOVI data indicates the risk factor for San Jacinto County is relatively low. Survivor submissions also indicated that 56% of the iSTAT entries in the county had insufficient insurance. TDEM has validated 8 major and destroyed submissions within iSTAT, and FEMA has certified 10.

San Jacinto County Office of Emergency Management have established emergency food distribution sites to provide food, ice, and water to the county.

Walker County

Walker County has been impacted by numerous severe weather events beginning in early April. These impacts have been severe storms that produced fierce winds and localized flooding and have resulted in 13 reports of damage to residential structures. Of these, two have been validated by TDEM as destroyed and major. Most of the damage has been reported in the Huntsville area. Walker County has suffered from severe flooding due to the impacts of hurricane Beryl - the location of this county has made it prone to major floodwaters. This has made it difficult for residents to regain normalcy since the last impacts of DR-4781.

On July 9th, the Public Utility Commission of Texas reported over 17,290 residents with power outages, which were sustained for an extended period. Due to the repeated impacts of severe storms, this area observed repeated outages beginning in late April.

Walker County has a population of 81,268 and a per capita income of \$23,220. The latest census reported that 20% of the population lives in poverty, and 8% of the population reported a disability. FEMA's SOVI data indicates the risk factor for Walker County is relatively low. Survivor submissions also indicated that 38.4% of the iSTAT entries in the county had insufficient insurance. A total of 17 survivor submissions have been entered in iSTAT for walker county, residents are continuing to submit more in the midst of this disaster.



Wharton County

Wharton County was impacted by many severe weather events beginning April 26, 2024, and lasting through early June. Over the last month, severe weather incidents have repeatedly impacted communities within Wharton County. Most of the county's reported damage has been reported in the cities of Wharton and El Campo.

Wharton County experienced hurricane level winds, heavy rain, and flooding from Hurricane Beryl. These impacts have resulted in 192 impacts to residential structures. Of these, twenty have been validated by TDEM as destroyed and major.

On July 9th, the Public Utility Commission of Texas reported over 11,760 residents with power outages, which were sustained for an extended period. Due to the repeated impacts of severe storms, this area observed repeated outages beginning in late April.

Wharton County has a population of 41,739 and a per capita income of \$29,061.

The latest census reported that 14.6% of the population lives in poverty, and 9% of the population reported a disability.

FEMA's SOVI data indicates the risk factor for Wharton County is relatively moderate. Survivor submissions also indicated that 24.1% of the iSTAT entries in the county had insufficient insurance. TDEM has validated 6 destroyed and 29 major damaged homes for this incident, FEMA has certified 5 destroyed and 17 major.

